

SPECIFICATION SHEET

Aluminium Corner Guard



• T: 01543 500893 • F: 01543 500894 • E: sales@tilerite.co.uk • W: tilerite.co.uk

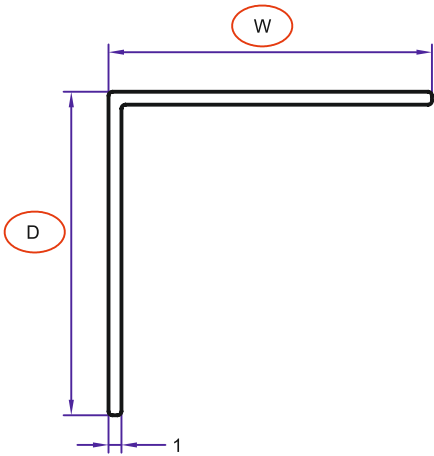
Product Description

Tile Rite Corner guards are designed to absorb and protect against impact damage on outer tile corners and other edges subjected to lots of wear and tear. Suitable for retro fixing, these profiles provide a decorative and clean finish as well as covering existing damage to walls.

Dimensions and Colour

Available in 20, 25 & 30mm depths finishes of Bright Silver & Stainless Steel Effect. Length 3m

Specification Drawings



CODE	W	D	FINISH
SCG690	20MM	20MM	BRIGHT SILVER
SCG621	25MM	25MM	BRIGHT SILVER
SCG692	30MM	30MM	BRIGHT SILVER
BSCG693	20MM	20MM	S/STEEL EFFECT
BSCG694	25MM	25MM	S/STEEL EFFECT
BSCG695	30MM	30MM	S/STEEL EFFECT

Technical Details

6463-T6 aluminum is a type of 6463 aluminum. It is furnished in the T6 temper. To achieve this temper, the metal is solution heat-treated and artificially aged until it meets standard mechanical property requirements. Suitable for a wide range of applications.

Exceptions: Not recommended for use above 80°C.

Corrosion Resistance: No corrosion in water or cleaning agent $9 < \text{PH} < 3$.

Wear Abrasion Resistance: Anodised hardness: 200-300 HV. Bright silver coating film 3my-7my. Brushed S/Steel coating film 8my-20my.

Maintenance

Tile Rite Corner Guard profiles do not require any special maintenance.

Aluminium must be tested to verify its suitability if chemical stresses are anticipated.

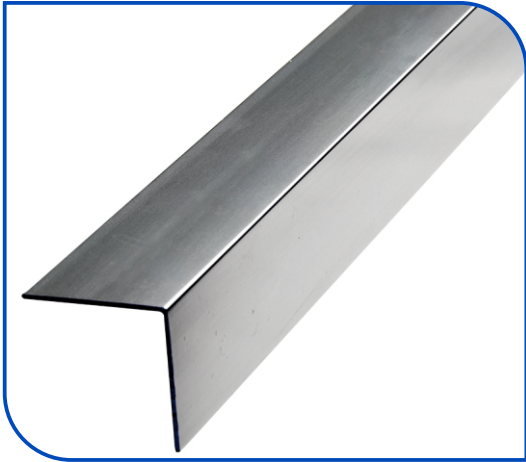
Cementitious materials, in conjunction with moisture, become alkaline. Since aluminium is sensitive to alkaline substances, exposure to the alkali (depending on the concentration and time of exposure) may result in corrosion (aluminium hydroxide formation). Therefore, it is important to remove adhesive or grout residue from visible surfaces. In addition, ensure that the profile is solidly embedded in the setting material and that all cavities are filled to prevent the collection of alkaline water.

The anodised layer creates a finish that retains a uniform appearance during normal use. The surface, however, is susceptible to scratching and wear and may be damaged by tile adhesive, mortar, or grouting material. Therefore, setting materials must be removed immediately.

After installation it is advisable to wash down the profile every 6 months with a PH neutral detergent in cold water and rinse off with clean cold water. Dry with a soft linen cloth using a gentle action to prevent friction heat when drying.

Installation

- 1 Ensure that the surface where the corner guard profile is being applied is smooth dry and free from any contaminants such as loose paint dust & grease.
- 2 Apply a bead of cartridge adhesive to the back of both wings and press the profile firmly into position using even pressure.



Aluminium Bar 6463 - T6	
Si%	0.343
Fe%	0.146
Cu%	0.17
Mn%	0.005
Mg%	0.524
Zn%	0.018
Ti%	0.021
Cr%	0.002
Ni%	0.004
Ga%	0.012
Na%	0.002
Pb%	0.004
V%	0.013
Al%	98.700
For Indoor Use	
Strength of extension	130-230Mpa
Coefficient of extension	25%
Elastic coefficient	68.9GPa
Bearing Yield Strength	103MPa
Poisson's ratio	0.33
Fatigue strength	62.1MPa
Solution temperature	520°C
Annealing temperature	415°C
Melting temperature	615-655°C
Specific heat capacity	900